

AGP-1700 Series

Parking Gates—Lighted or Non-Lighted

Features:

- Large, cabinet-style design
- Four selectable modes of operation
- Versatile footprint for easy replacement of other gates
- Pre-installed detector harness
- Access door can be located on any side of pedestal
- Microprocessor-based logic and functionality
- Standard “extra sensory” safety feature
- Instant reversing motor
- Heavy-duty polyethylene cover will not crack or peel
- 1/3 horsepower motor with sealed gear reducer
- Internal thermal/overload protection
- Thermostat-controlled heater
- 12’ standard or lighted gate arm, and 11’ standard folding gate arm configurations available



Lighted Gate Option (110v Version Only)

- Provides exceptional visibility between dusk and dawn (gate arm lights flash when in motion)
- Increases pedestrian/motorist safety
- May be retrofitted to existing AGP-1700 gates
- Both gate arm and hood may be lighted (hood may accommodate custom user logo)



Amano Cincinnati's AGP-1700 Series Parking Gate is designed to meet all your parking control needs. The microprocessor-based logic and functionality provides the ultimate in reliability, performance and safety, as well as the flexibility to accommodate four different modes of operation.

SPECIFICATIONS

AGP-1700 Series Parking Gates

ELECTRICAL

- 120V AC, 60 Hz
- 220/240V AC, 50/60 Hz (Non-lighted version only)

Service amps: 19.6A (120V)
Lighted gate: 20A (100V 120V)
10A (240V)

Connections: • Four utility power outlets
• DIN rail terminal blocks including logic
• Main power breakers

Field wiring: • Removable terminal block assembly
• Dry contact input, output
• 12V DC unregulated

MOTOR CHARACTERISTICS

Horsepower: 1/3 single-phase instantly reversing motor
Speed: 1625 RPM
Starting amps: 10A (120V) maximum
Running amps: 4.5A (120V)

Heavy-duty V-belt to drive speed reducer
Internal thermal/overload protection

ENVIRONMENT

Temperature: -15°F ~130°F (-26°C ~ 54°C). Automatic thermostat-controlled heater included

Humidity: 10% ~ 90% (non-condensing)

CABINET

Heavy-duty, 14-gauge all-weather steel construction with high-density polyethylene cover (aluminum cover optional). Direct replacement footprint for other brand gates

Dimensions: 45-1/2" h x 18" w x 18" d (116 cm x 46 cm x 46 cm)

Weight: 166 lbs. (75 kg)

Access: Removable cover on drive mechanism (360° access)
Removable door (access to electrical connections and control box)

Finish (Std): Yellow (RAL #1028); White (RAL#9010)

GATE ARM

Height: 34" (86 cm) in DOWN position

Length: A10: 10' (304 cm) — wood
AL12: 12' (365 cm) — aluminum
AL20: 11' (323 cm) folding gate arm — aluminum

Illumination kit: Available for AL12 gate arm (AGP-0515/A623)

Optional Sonic Alert: Audible alarm kit (AGP-0517/A627)

MICROPROCESSOR-BASED CONTROLLER

Quick, plug-in installation. Gate up/normal/down switch (internal manual override)

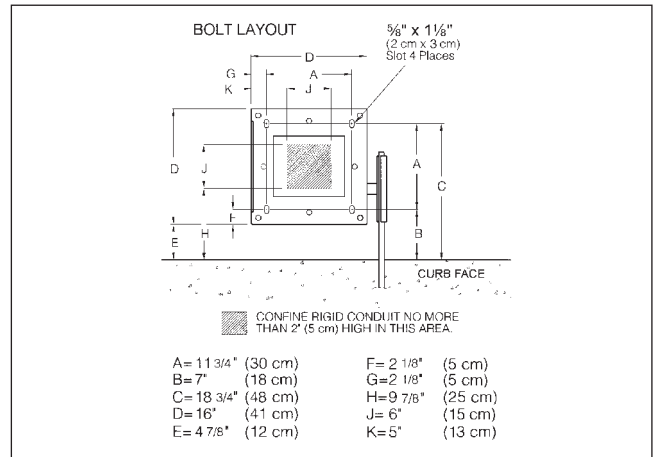
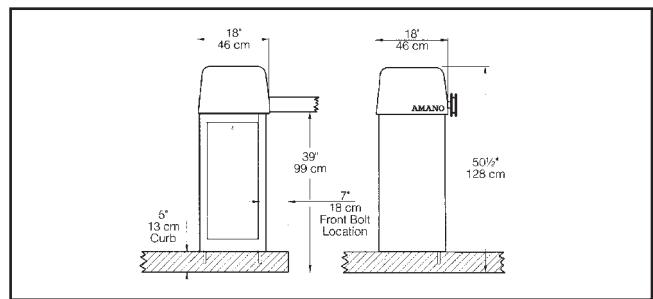
Operation modes:

- One way pay
- Free direction with backaway
- Bi-directional lane
- Input/output lane controller

Switch selectable features:

- "Extra sensory" timer
- Closing loop safety "auto stop"
- Backout timer

Built-in detector harness will accept single channel (AGP-0134) or dual channel (AGP-0234) vehicle detectors



Specifications are approximate and are subject to change without notice

Manufactured by Amano Cincinnati, Inc.'s Ohio factory, an ISO 9001:2000 registered facility.



UL approval does not apply to 220/240V AC, 50/60 Hz

REPRESENTED BY:

AMANO[®]
We Understand Parking

Corporate Headquarters: 140 Harrison Avenue, Roseland, NJ 07068-1239
Atlanta / Chicago / Cincinnati / Dallas / Los Angeles / New York / Toronto

(800) 526-2559 www.amano.com